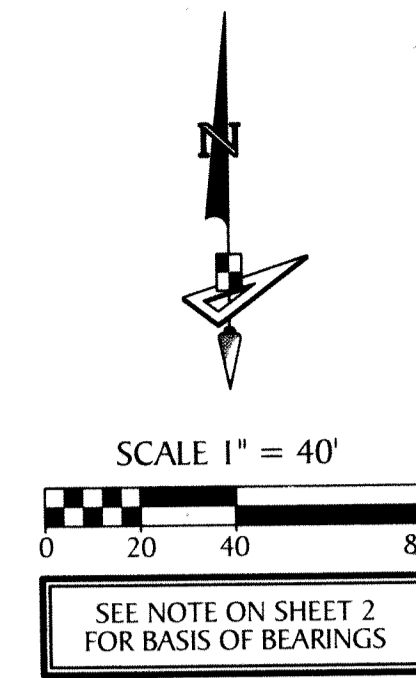
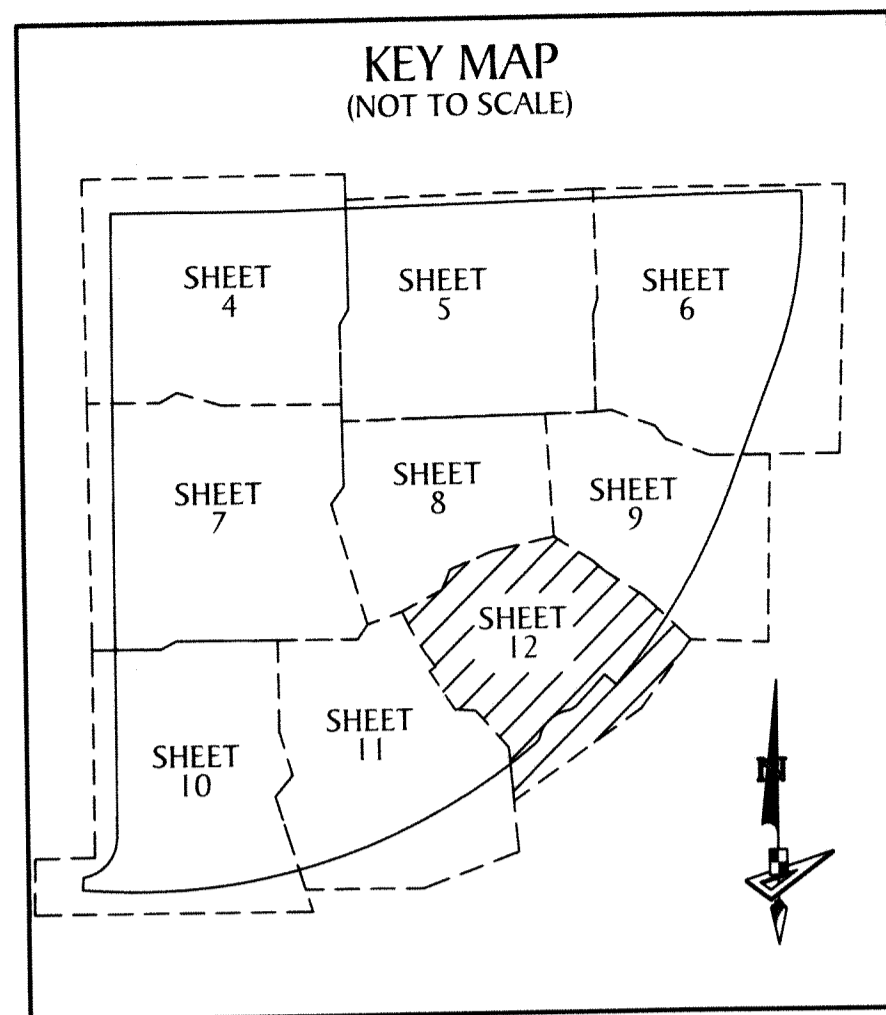
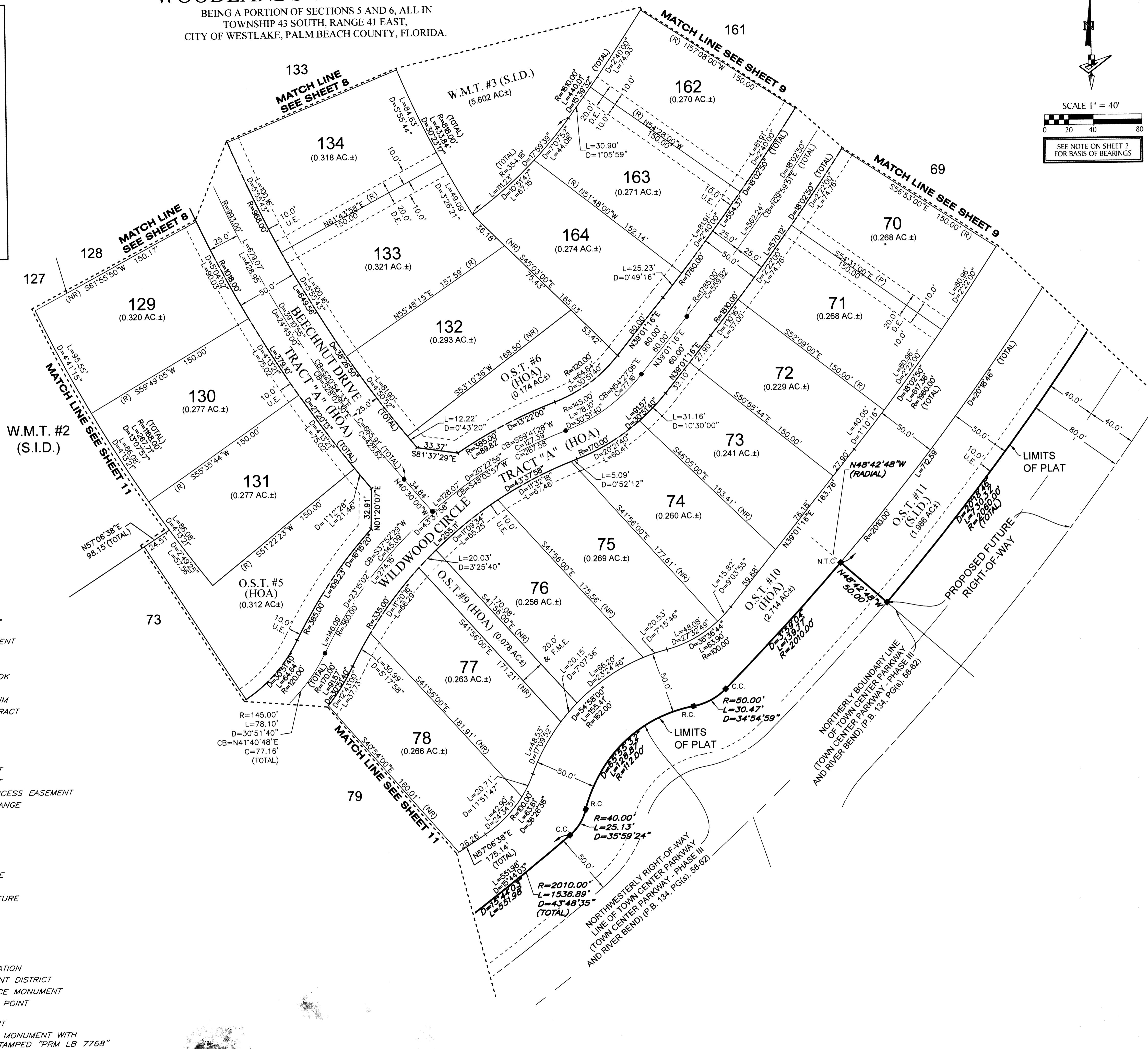


# WOODLANDS OF WESTLAKE

BEING A PORTION OF SECTIONS 5 AND 6, ALL IN  
TOWNSHIP 43 SOUTH, RANGE 41 EAST,  
CITY OF WESTLAKE, PALM BEACH COUNTY, FLORIDA.



# 178



- LEGEND**
- P.O.B. --- POINT OF BEGINNING
  - P.O.C. --- POINT OF COMMENCEMENT
  - P.B. --- PLAT BOOK
  - D.B. --- DEED BOOK
  - O.R./O.R.B. --- OFFICIAL RECORDS BOOK
  - PG./PG(S) --- PAGE(S)
  - NAD --- NORTH AMERICAN DATUM
  - W.M.T. --- WATER MANAGEMENT TRACT
  - O.S.T. --- OPEN SPACE TRACT
  - P.B.C. --- PALM BEACH COUNTY
  - U.E. --- UTILITY EASEMENT
  - D.E. --- DRAINAGE EASEMENT
  - F.M.E. --- FORCE MAIN EASEMENT
  - W.M.E. --- WATER MAIN EASEMENT
  - L.M.A.E. --- LAKE MAINTENANCE ACCESS EASEMENT
  - 6-43-41 --- SECTION-TOWNSHIP-RANGE
  - R --- RADIUS
  - L --- ARC LENGTH
  - D --- DELTA ANGLE
  - CB --- CHORD BEARING
  - C --- CHORD
  - C.C. --- COMPOUND CURVATURE
  - R.C. --- REVERSE CURVATURE
  - N.T.C. --- NON-TANGENT CURVATURE
  - P.C. --- POINT OF CURVATURE
  - P.T. --- POINT OF TANGENCY
  - R/W --- RIGHT-OF-WAY
  - (R) --- RADIAL
  - (NR) --- NON-RADIAL
  - HOA --- HOMEOWNERS ASSOCIATION
  - S.I.D. --- SEMINOLE IMPROVEMENT DISTRICT
  - PRM --- PERMANENT REFERENCE MONUMENT
  - --- PERMANENT CONTROL POINT
  - --- FOUND PERMANENT REFERENCE MONUMENT
  - --- SET 4"x4" CONCRETE MONUMENT WITH 2" ALUMINUM DISK STAMPED "PRM LB 7768"